



Non-Contact  
Temperature  
Screening Imager

## DUO640 Smart Non-contact Human Temperature Screening Technology



Powered by:

BeMotion<sub>INC</sub>



# DUO640 Scanner Features



## PROTECT YOUR EMPLOYEES AND COMPANY:

Ensure the safety of your people. Avoid lawsuits from exposed employees caused by manual temperature checks!



## PLUG-AND-PLAY SYSTEM:

Maximize manpower utilization. Run your business and let the DUO scanner do the work.



## SMART AI TECHNOLOGY:

Tracks 5 points from the face and scans **600+ people** per minute at speed even with face coverings such as a mask, sunglasses, baseball cap or a combination of all three.



## AUTO ALARM SYSTEM:

Alarm system is activated in 0.5 seconds upon detection of temperature targets.



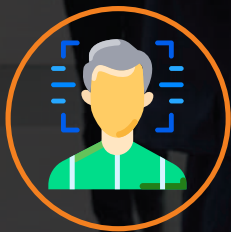
## DUAL VISION:

Allows the administrator to view both thermal and high resolution images of the human face



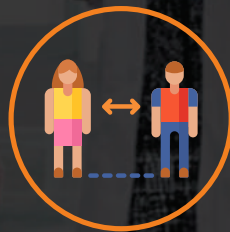
## ±0.3°C ACCURACY:

Ensures accurate recording of temperature measurement.



## 99.7% RECOGNITION RATE:

High success rate of face recognition for more accurate contact tracing.



## 13M MEASURING DISTANCE:

Capable of scanning more than 20 **people** at the same time



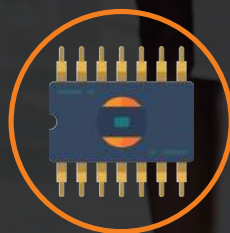
## NO DATA BREACH ISSUE:

The system operates offline.



## LIFETIME QUALITY:

2 years warranty.



## OUR COMPONENTS:

Are primarily sourced from the United States.



## BLACKBODY:

No BlackBody Required.



**NO WIFI NEEDED:**  
DUO400 works off-line.



**SHIPPING AND  
INSTALLATION INCLUDED**

For more information please contact: [info@bemotioninc.com](mailto:info@bemotioninc.com)